

Specifications 4 Smoke and Heat Exhaust Ventilators

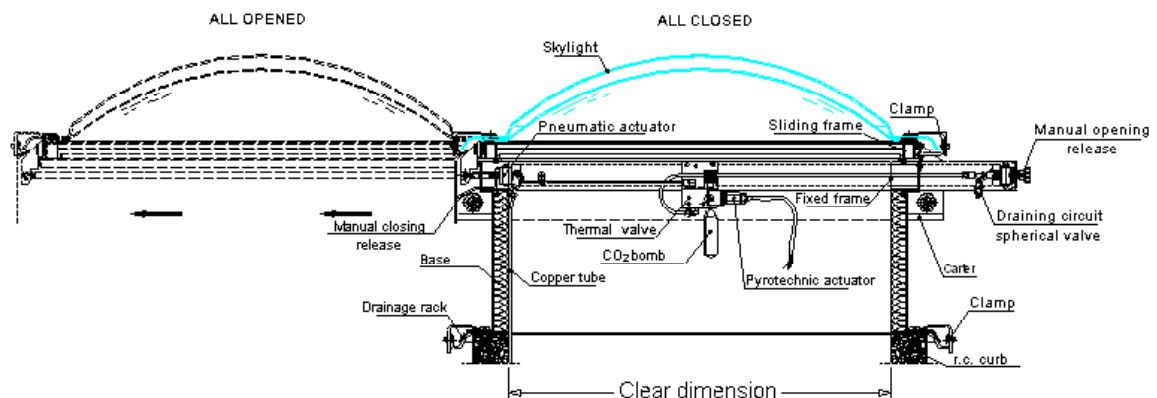
The patented EFC with lateral sliding 180° (**VITAL DOME S**) and the other ones with overturning 165° (**VITAL DOME R**), got thought all tests that are in UNI EN 12101-2: 2003, obtaining this specification:

MODEL	RESULT	TEST
VITAL DOME S	RE 2000	Reliability at 2000 consecutive function cycles in fire opening position with over 1000 openings did to guarantee the use of exhaust ventilators also for daily ventilation
VITAL DOME R	RE 50	Reliability at 50 consecutive function cycles in fire opening position
VITAL DOME S	SL 1000	Opening of device under uniformly distributed load, with lateral wind that opposites to opening with speed 10 m/s and with 1000 Pa load
VITAL DOME R	SL 500	Opening of device under uniformly distributed load, with lateral wind that opposites to opening with speed 10 m/s and with 500 Pa load
VITAL DOME S	WL 1500	Simulated wind load, applying uniformly distributed load of 1500 Pa for 10 min on exhaust ventilator positioned overturned
VITAL DOME R	WL 1500	
VITAL DOME S	B 300	Heat resistance test is realized by covering a oven-room for 30 min (5 min closed and 25 min in fire opening position) with device completed by base and skylight, at 300 °C
VITAL DOME R	B 300	

It's possible to make EFC VITAL DOME with these dimensions:

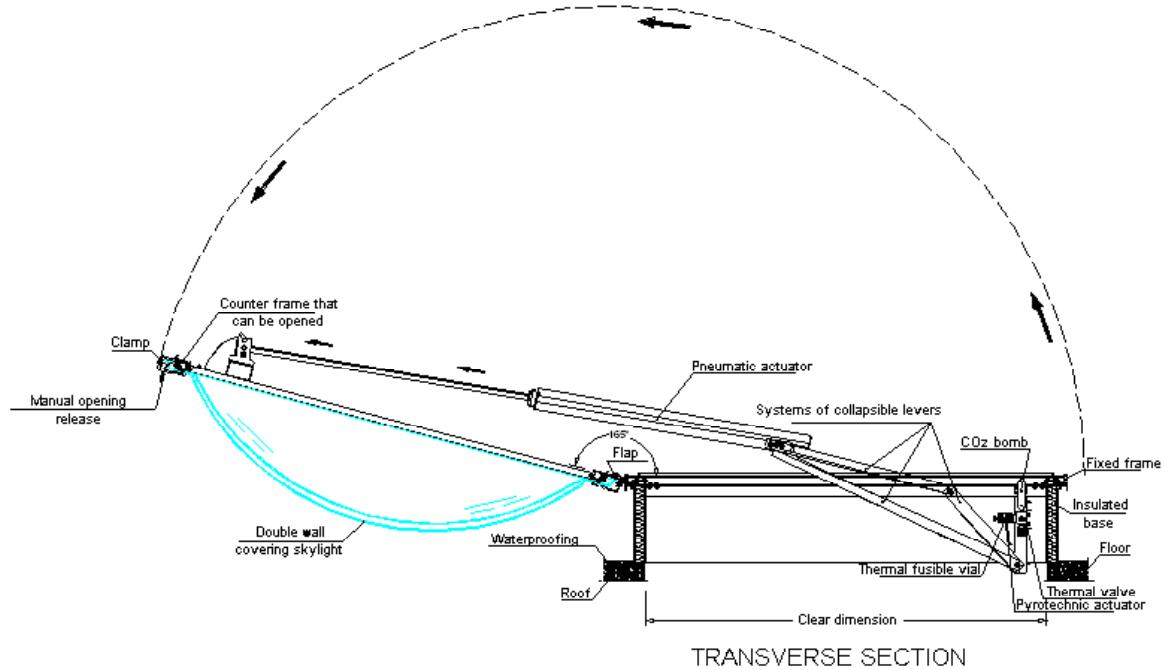
- **VITAL DOME R:**
 - Square: from minimum C.D. 80x80 cm , to C.D. 170x170 cm minimo 80x80 cm, with variant pitch of 10 cm.
 - Rectangular: from minimum C.D. 80x90 cm to C.D. 130x250 cm, with variant pitch of 10 cm.
- **VITAL DOME S:** from minimum C.D. 70x70 cm to C.D. 130x250, with variant pitch of 10 cm.

VITAL DOME S



TRANSVERSE SECTION

VITAL DOME R



SKYLIGHT			DEVICE							Nr.	BASE
Wall (S/D)	Material (PCC/PMMA)	Colour (B/T/A)	Model (S/R)	SUA	SUT	L.N.	SET (68°/93°)	Opening (Am/Ae/I/AI/PU)	Control (Bo/Pi/Em)		

NOTES

SKYLIGHT	S to choose single wall or D to choose double wall	BASE DATA (look relating section)
	PCC for thick polycarbonate or PMMA for thick methacrylate	
	B for white, T for transparent or A for other (blue, bronze, smoky	
DEVICE	S for patented sliding 180° or R for overturning 165°	
	SUA indicate the required value [mq] of vent area (*)	
	SUT indicate the required value [mq] of total vent area (*)	
	L.N. indicate clear dimension [cm] (hole)	
	68° - 93° set temperature at which vial that permits opening, fuses	
Am/ e only air clearing Manual/Electric – I only blaze- AI for both ones – PU manhole		
Bo for BOX pneumatic control and management; Pi for one-time pyrotechnic actuator or Em for rearm able electromagnetic actuator, linked at control unit aimed at smoke survey and blaze control		

(*) C.D. must be indicated always with SUA and SUT, or at least with one of them